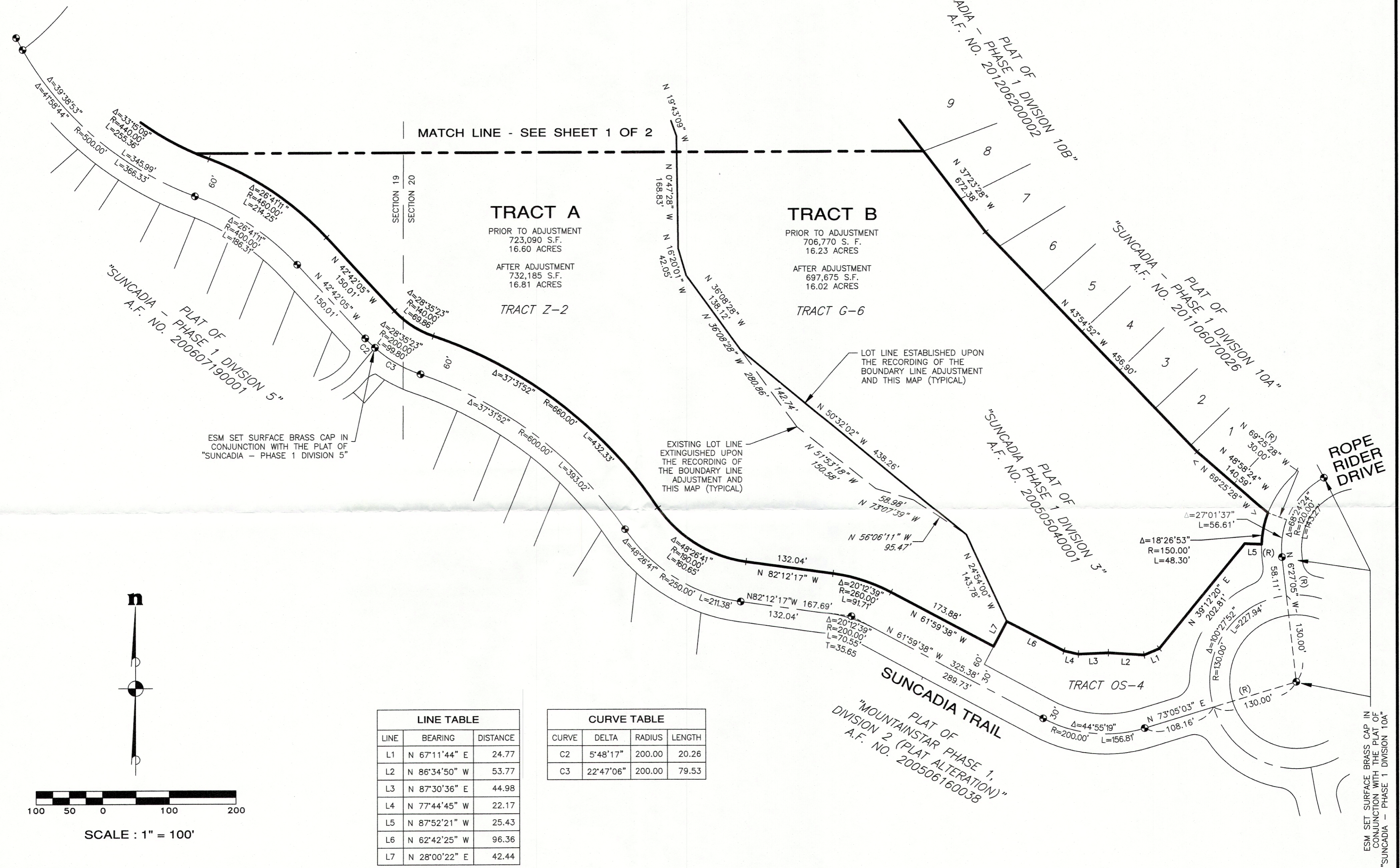


A PORTION OF SECTIONS 19 AND 20, T. 20 N., R. 15 E., W.M., KITTITAS COUNTY, WASHINGTON



MATCH LINE - SEE SHEET 1 OF 2

TRACT A
 PRIOR TO ADJUSTMENT
 723,090 S.F.
 16.60 ACRES
 AFTER ADJUSTMENT
 732,185 S.F.
 16.81 ACRES
 TRACT Z-2

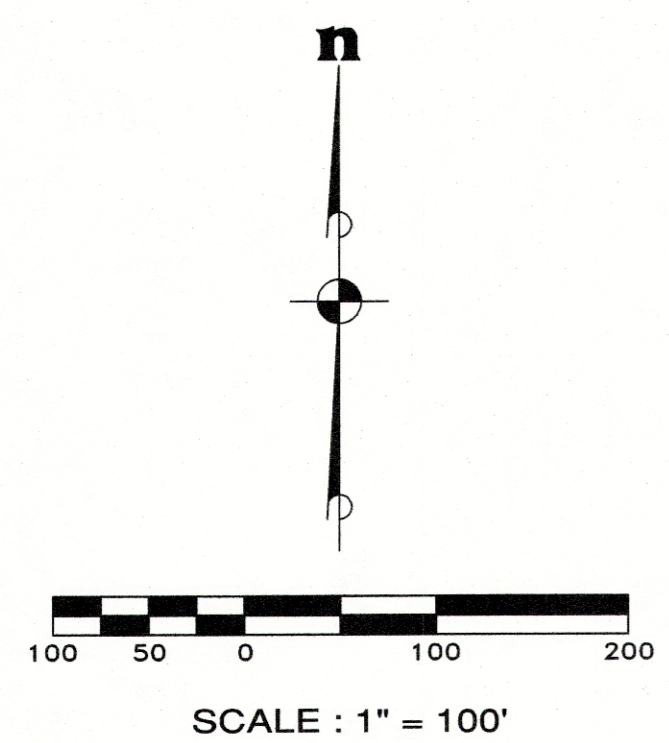
TRACT B
 PRIOR TO ADJUSTMENT
 706,770 S.F.
 16.23 ACRES
 AFTER ADJUSTMENT
 697,675 S.F.
 16.02 ACRES
 TRACT G-6

LINE TABLE

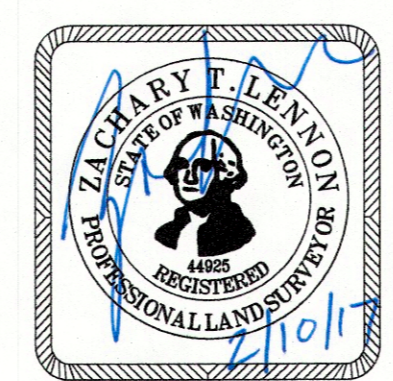
LINE	BEARING	DISTANCE
L1	N 67°11'44" E	24.77
L2	N 86°34'50" W	53.77
L3	N 87°30'36" E	44.98
L4	N 77°44'45" W	22.17
L5	N 87°52'21" W	25.43
L6	N 62°42'25" W	96.36
L7	N 28°00'22" E	42.44

CURVE TABLE

CURVE	DELTA	RADIUS	LENGTH
C2	5°48'17"	200.00	20.26
C3	22°47'06"	200.00	79.53



- LEGEND**
- ⊙ = CENTERLINE MONUMENT SET WITH THE PLAT OF "MOUNTAINSTAR PHASE 1, DIVISION 2 (PLAT ALTERATION)" BY W&H PACIFIC A.F. NO. 200506160038, UNLESS OTHERWISE NOTED
 - (R) = RADIAL
 - Δ = DELTA
 - R = RADIUS
 - L = ARC LENGTH
 - ∠ = RADIAL BEARING AT LOT CORNER



DRAWING NAME : ESM8\ESM-JOBS\1634\001\009\SURVEY PLOTS\P1D6-BLA-02.DWG

RECORDING CERTIFICATE

FILED FOR RECORD THIS _____ DAY OF _____, 2017 AT _____ M. IN BOOK _____ OF SURVEYS AT PAGE _____ AT THE REQUEST OF ESM CONSULTING ENGINEERS, LLC.

COUNTY AUDITOR _____ DEPUTY _____

RECEIVING NO. _____

ESM CONSULTING ENGINEERS LLC
 33400 8th Avenue S. #205
 Federal Way, WA 98003
 www.esmcivil.com

FEDERAL WAY (253) 838-6113
 EVERETT (425) 297-9900

Civil Engineering Public Works | Land Surveying Project Management | Land Planning Landscape Architecture

JOB NO. 998-753-016-0101 | DATE: 2017-02-10
 DRAWN: C.A.F./R.F.G. | SHEET 2 OF 2